

(2001)

" (1997)
(IASB)

2001 (IASCF)

166

7TH floor, 166 fleet street, London EC4A 2DY, United Kingdom.

E-mail: publications@iasb.org.uk

Internet : <http://www.iasb.org.uk>

()

1997 31

(2001)

6-1

9-7

8

9

16-10

19-17

36-20

33-20

36-34

61-37

53-37

61-54

70-62

-

74-71

76-75

- 1

- 2

- 3

- 4

- 5

(2001)

"

"

.1

:

f

4

:

"

)

.f

.ب

.(

.2

.3

.19 17

.4

.5

.6

" 1

1

"

"

.7

:

)

.(

:

.f

.ب

-

()

:

.f

.ب

.()

)

: (

.f

.ب

.1

.2

.3

-

.

:

ا.

ب.

ج.

د.

:

ا.

ب. ()

.9

.10

.11

.12

.13

أ.

ب.

ج.

د.

هـ.

و.

.14

:

أ.

-

)

.(

.ب

.ج

.15

9 5

)

(

)

(

.16

.17

/

(

)

.أ

.ب

.ج

.18

/

.19

"

"

.20

.21

.22

.23

.24

.25

.26

.27

.28

/

.29

.30

.31

.32

f

.ب

:

.1

	.2
	.3
	.ج
	.ب
	.د
	.1
	.2
	.3
/	.33
	.34
()	.35
	.36
	.ج
	.1
	.2
	.3
	.ب

ج

د

1

2

3

37

38

39

.40

.41

.42

.43

.44

.45

.46

.47

.48

.49

.50

.51

.52

.1

.2

.3

.53

.	.54
.	.55
. ¹	
()	.56
.	
.	.57
-	
/	
.	
.	.58
.	
.	
.	.59
.	
.	
.	.60
.	
.	
.	.61
:	
.	
.	.1
.	.2
.	.3
.	
.	

¹ أنظر أيضا التفسير رقم 15، عقود الإيجار التشغيلي - الحوافز.

.62

.63

.64

.65

.66

.67

.68

.69

.70

.71

.72

.73

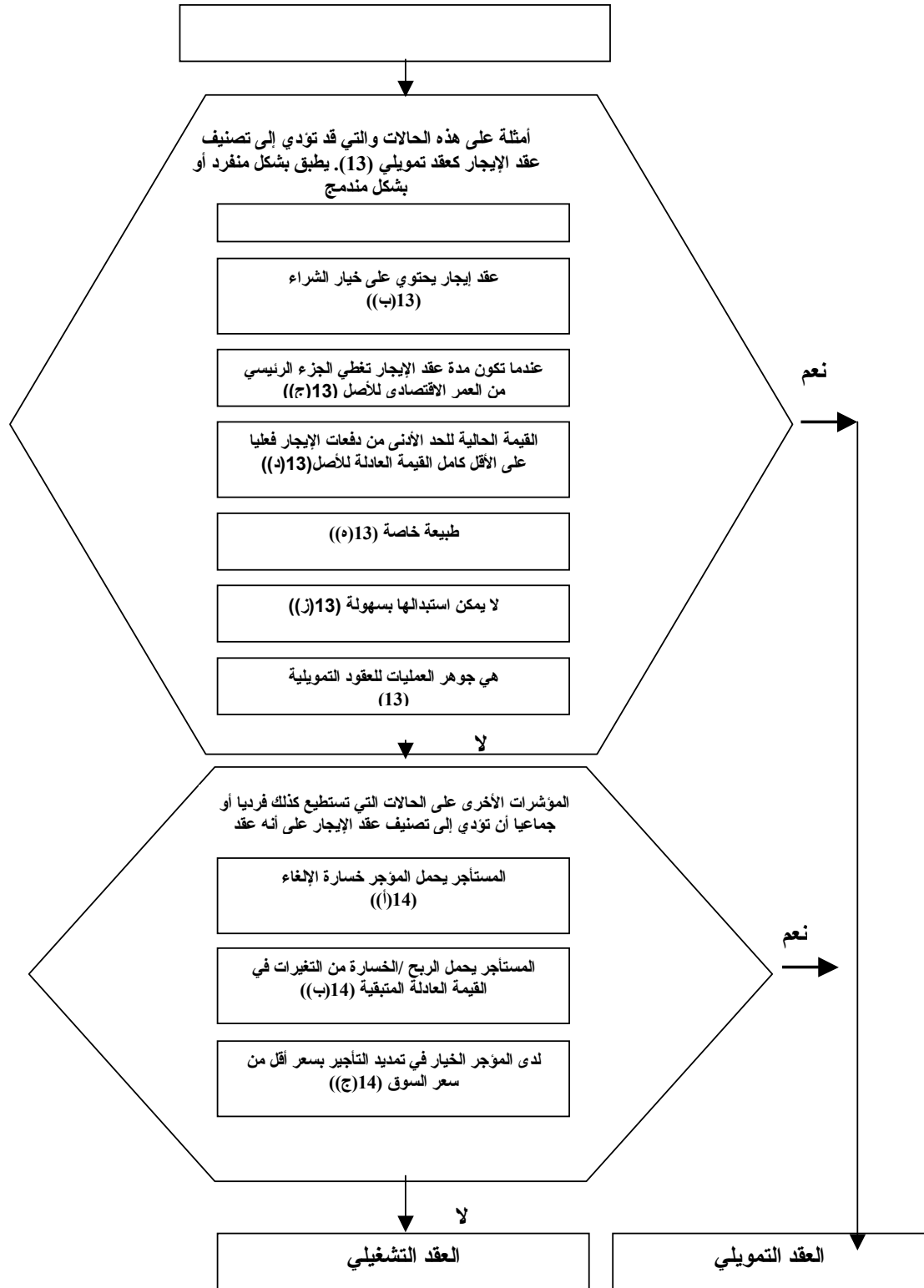
.74

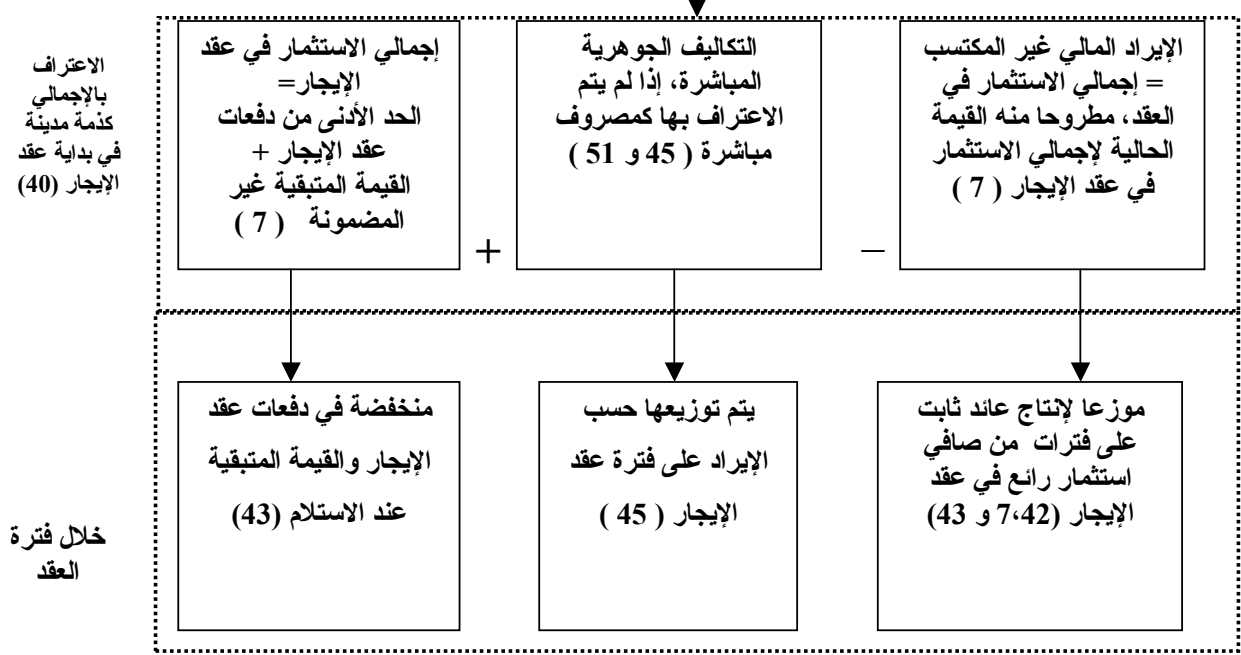
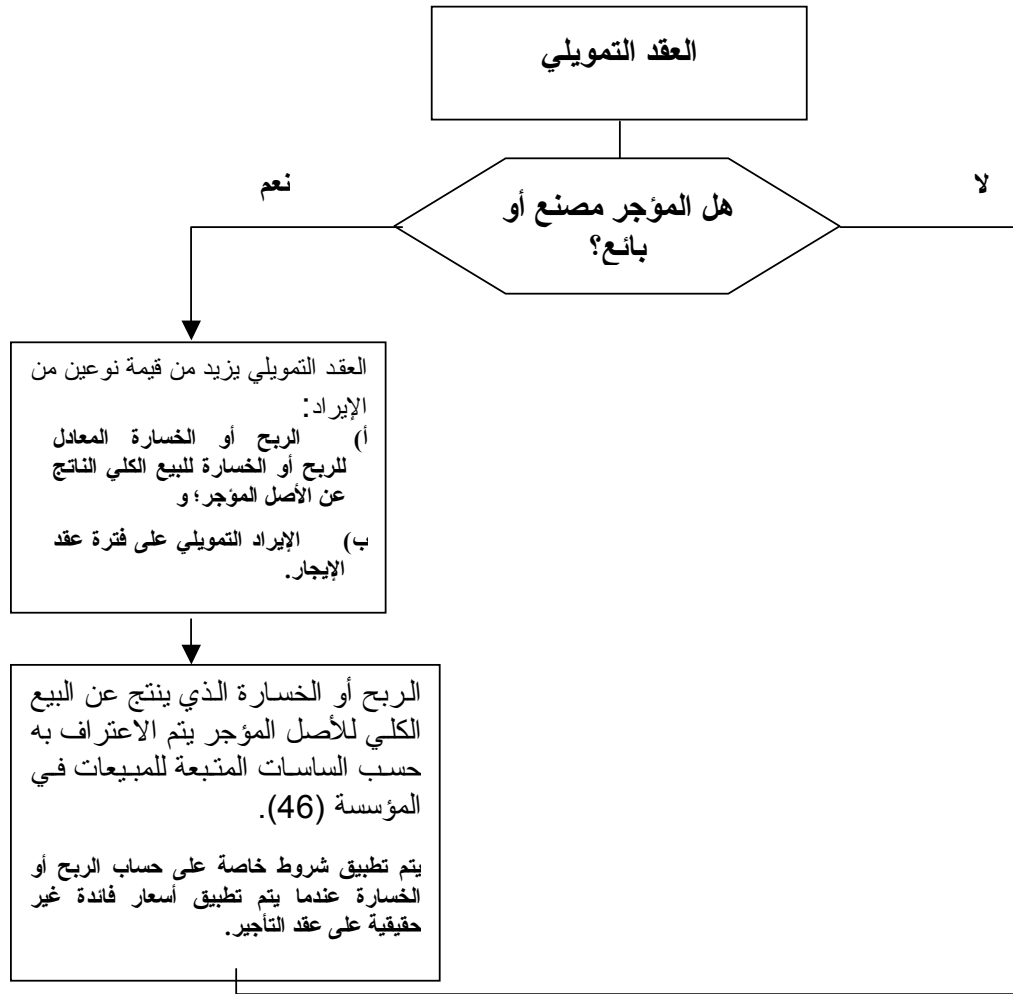
.75

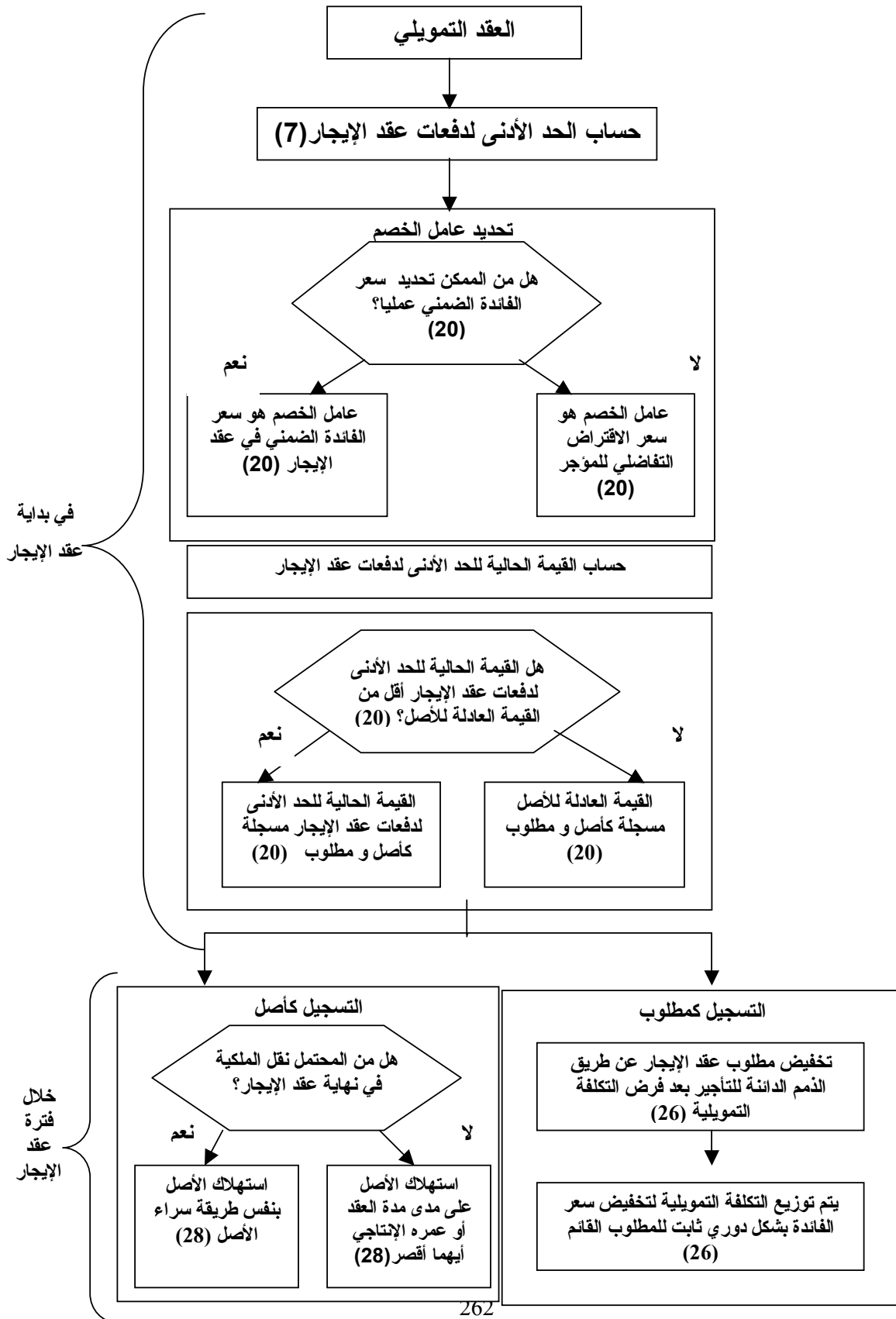
2003 ()

.76

(13)







			(52)

			(52)
(1)			
(1)			
(1)			

			(52)
)	(52		
(1)			

67

: (1)

67

: (2)

.(65)

: (3)

.67

- 5

20

$$\left(\frac{1}{(+1)} \right)^{-1} + \frac{1}{(+1)} =$$

=
=
=
=

10.000 25.000 " "

4 5.429

.7% .10% 7.5

7%

10%

8.5%

:

$$25.000 =$$

=

4 =

$$10.000 =$$

$$5.429 =$$

(0.07) 7% ""

:(

)

$$\left(\frac{1}{(0.07+1)^4} - 1 \right) \frac{5.429}{0.07} + \frac{10.000}{(0.07+1)^4} =$$

$$18.390 + 7.629 =$$

$$26.019 =$$

:(

)

$$25.673 = 7.5\%$$

$$24.040 = 10\%$$

$$24.674 = 9\%$$

$$25.333 = 8\%$$

$$25.000 = 8.5\%$$

8.5%

:

7%

:() 10%

$$(25.000 - 26.019) \cdot 1.019 = 26.019 = 7\%$$

$$(24.040 - 25.000) \cdot 960 = 24.040 = 10\%$$

$$\frac{1.019}{(960 + 1.019)} (7\% - 10\%) + 7\% =$$

$$(0.5 \times 3\%) + 7\% =$$

$$1.5\% + 7\% =$$

$$8.5\% =$$

8.5%

" "

:

0

14.221	18.110	21.696	25.000	25000
1.209	1.539	1.844	2.125	-
*14.221	3.890	3.585	3.304	-
-	14.221	18.110	21.696	25.000

*

مقارنة مع المعيار المحاسبي الدولي السابع عشر

" "

" (1997) "

:

" " 41

•

.41

13

•

•

" " " "

" " " "

" " " " " "

"

" "

•

.(7)

•